

newhomes

Whistle while you walk

Canary Park neighbourhood is maturing

LISA VAN DE VEN
Steps Away

Fly like a bird and you could get to the whole city in no time from the Front and Cherry location of Canary Park Condominiums, part of the Canary District master-planned community. Thankfully, though, there's plenty within walking distance, too. The 35-acre project was one of the housing sites for the Pan Am and Parapan Am Games, and will incorporate affordable housing as well as retail and condo development, with occupancy scheduled to begin this spring. For developers Dream Unlimited and Kilmer Van Nostrand, it's an opportunity to build a large-scale community close to downtown, says Jason Lester, senior vice-president of Dream Unlimited. "Having an opportunity to build a master-planned community is top of mind for a lot of developers."

25 Steps Thanks to Pan Am, the Canary District already has a reputation for health and wellness. This theme will influence the entire site. "We've said to the restaurants we'd like to make sure there's some kind of healthy component to their menus," Lester says. Downstairs from Canary Park, then, Middle Eastern favourite Tabulé and brick-oven pizza restaurant Pizza e Pazzi will offer health-conscious options. And even if you choose to indulge, you can wear it off after, with the help of the Gears bike shop. "The community connects to all the bike paths in the ravine system," Lester adds. "So it goes up the Don Valley trail system to the Evergreen Brick Works, the Science Centre and beyond."

50 Steps Talk about healthy living. Corktown Common park is already a prominent Canary District landmark, while the Running Room is coming soon, and the Cooper Koo Family Cherry Street YMCA is set to open in 2016. The YMCA will be central to the Canary District community, Lester says, with a running track, gym, swimming pools and a green roof, as well as space for community programming. And for when it's time to leave — maybe for something a little less healthy — the King streetcar will have a new stop inside the community, connecting it to other parts of the city. "That will start running here next year," Lester says.

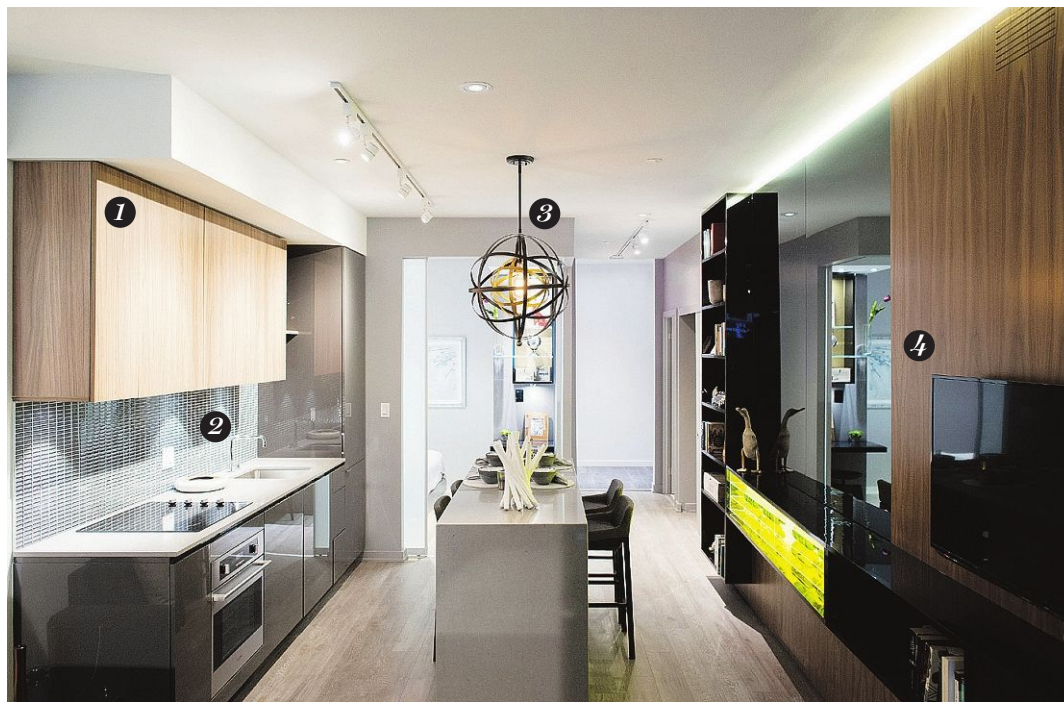
250 Steps Residents won't have far to go for art and culture. A five-minute walk away, the Distillery District has the Soulpepper Theatre Company, spaces like Proof Studio Gallery and Dish Gallery Studio, and more restaurants and shops.

Suites at Canary Park Condominiums range from 487 to 1,300 square feet and from \$281,900 to \$786,900. The sales office is at 398 Front St. E., Toronto, open Monday to Thursday noon to 6 p.m., weekends noon to 5 p.m. Call 416-603-7576 or visit canarydistrict.com.

National Post



NATIONAL POST



Positive space

Johnson Chou's 150 Redpath model suite eases any storage issues with plenty of slick built-ins *By Lisa Van de Ven*

Interior designer Johnson Chou was trying to evoke a sense of the familiar in the model suite for 150 Redpath. He designed the 714-square-foot unit with warm woods and carefully collected accessories, for a look he says has "a whiff of nostalgia." "You're surrounded by the familiar, both objects and decor," adds Chou, of Johnson Chou Inc. Rich walnut built-ins are paired with a warm grey palette, while texture and lighting play an important role, creating a space meant to appeal to a well-travelled, cultured buyer. "It's about comfort and intimacy, and it's meant to evoke an elegance and sophistication," Chou says. Suites at the Freed Developments and Capital Developments site range from 376 to 1,403 square feet and from \$221,990 to over \$1 million. The sales office is located at 2239 Yonge St., Toronto and open Monday to Wednesday from noon to 6 p.m., Thursday from noon to 7 p.m. and weekends from noon to 5 p.m. Call 416-996-5428 or visit redpathcondos.com.

1 "You're really looking for balance. Balance is key," the designer says, and in the suite's kitchen he found it through walnut veneer upper cabinetry paired with high-gloss charcoal grey cabinets below. The space is functional, too, featuring open shelving and an island that doubles as a table.

4 Black lacquer and walnut are combined in an accent wall that spans the living space, creating a warm, contemporary accent. It's complete with built-in bookshelves, as well as a large mirror that opens up the room, and a wine rack that adds pop with LED lighting.

2 Grey takes centre stage in this suite, and the kitchen is no exception. A grey glass tile backsplash is paired with grey Caesarstone countertops, while wood laminate floors in a warm grey-brown tone are used throughout the suite. "They're warm earthy greys; neutral tones," Chou adds.

5 A custom walnut headboard features display boxes presented in different sizes and shapes, to create untraditional spaces for bedroom accessories. "It's important when you have boxes or displays like this that you have a lot of negative space surrounding the objects so it's not too cluttered," Chou adds.

3 This spherical steel-and-glass light fixture from Elte Market isn't meant to recede into the background — rather, it draws eyes its way. "As opposed to something light, airy and see-through, which was what we'd normally do, we thought that the light itself had to ground the space," Chou says.

6 The devil is in the detail — and so is the strength of a design. Here, gold accent wallpaper backs one display box, with matching gold accent pillows on the bed. Even the bedding was considered carefully. "Quality in the bedding tends to elevate the entire space," Chou says.

FOR SALE



Price range: Starting from the \$200,000s
Location: Eglinton Avenue and Hurontario Street, Mississauga

PARK PROXIMITY

Part of the master-planned Pinnacle Uptown community, Amber is a two-tower project located next to a 15-acre park. The site is close to restaurants, schools and shopping.

Builder/developer Pinnacle International
What's new The sales office is now open.

Building 23 and 26 storeys

Suites One-bedroom to two-bedroom-plus-den layouts

Size 560 to 919 square feet

Occupancy October 2017

Features Nine-foot ceilings, laminate wood flooring and granite or Caesarstone countertops

Amenities A fitness centre, indoor pool, hot tub, sauna, games/billiards room, terrace, kids' play area, party room and two guest suites

Sales office Located at 5044 Hurontario St., Mississauga. Open Monday to Thursday from 1 to 7 p.m., and Friday to Sunday from noon to 6 p.m. Call 905-568-9000 or visit pinnacleuptown.com.

L.V., National Post



Price range: \$169,900 to over \$500,000
Location: Huntsville

SKI, SWIM, SPA

Part of Deerhurst Resort, Lakeside Lodge is surrounded by amenities that include golf courses, tennis courts, indoor and outdoor pools, restaurants and spa facilities. Located on Peninsula Lake, the condominium building is also close to the resort's beach and docks.

Builder/developer Skyline Resort Communities
What's new Construction has started

Building Five storeys

Suites Studio to three-bedroom layouts

Size 400 to 1,200 square feet

Occupancy Begins in late 2016

Features Units will have stainless steel appliances, laminate flooring and fireplaces.

Amenities The building will feature a lounge, games room, pool and barbecues.

Sales office Located at 1235 Deerhurst Dr., Huntsville and 1826 Commerce Park Dr., Innisfil. Both are open daily from 10 a.m. to 5 p.m. Call 1-855-801-7747 or visit skyline-communities.com.

L.V., National Post

MORTGAGE RATES 16.12.15

Rates are subject to change. Selection of financial institutions may vary weekly. Figures supplied by Fiscal Agents

	Variable rate	6months	1yr	2yr	3yr	4yr	5yr	Variable rate	6months	1yr	2yr	3yr	4yr	5yr	
BANKS								TRUST LOAN							
ATB Financial	2.45	4.00 - 4.00op	2.94 - 4.00op	2.64 - 4.00op	2.64	2.74	2.94	Community Trust	n/a	6.50	3.14	3.25	3.95	4.39	4.64
Alterna Svgs/Alterna Bk	2.70	4.00 - 6.30op	2.85 - 6.30op	2.85	2.59	2.94	2.68	Concentra Financial	n/a	5.00 - 6.70op	2.89 - 6.30op	2.59	3.39	3.89	4.64
Bank of Montreal	2.70	4.00 - 6.30op	2.89 - 6.30op	2.84	3.39	3.89	2.79	Effort Trust	n/a	4.45 - 6.30op	3.35 - 6.30op	3.50	3.70	4.30	4.35
Bank of Nova Scotia	2.70	4.55 - 6.45op	3.29 - 6.50op	3.09	3.39	3.89	4.49	Home Trust Company	2.35	3.95	2.69	2.24	2.39	2.59	2.79
Canadian Western Bank	-	4.00 - 6.45op	3.14 - 6.30op	3.04	3.65	4.20	4.74	Investors Group Trust	n/a	4.20 - 6.50op	3.14 - 6.30op	3.09	3.39	3.89	2.79
CFF Bank	-	-	2.69	2.24	2.39	2.59	2.74	MTCC	2.70	4.55 - 6.45op	3.29 - 6.50op	3.09	3.39	3.89	4.49
CIBC	2.70	6.95op	2.84 - 6.35op	2.79	2.49	2.74	4.79	OTHER							
Equitable Bank	-	-	3.14	3.04	3.65	4.39	4.64	Comtech Credit Union	2.45	6.20 - 6.40op	2.79 - 6.30op	2.89	2.95	2.99	2.69
ICICI Bank Canada	2.75	-	3.15	3.65	3.64	3.69	3.69	DUCA Credit Union	2.50	-	3.09 - 5.75op	3.00	2.99	3.09	2.79
Manulife Bank	2.40	4.45	3.00 - 3.20op	2.94	2.84	2.79	2.79	First National Fin. LP	-	3.10	2.29	2.24	2.44	2.64	2.79
National Bank	n/a	4.40 - 6.70op	3.14 - 6.70op	3.04	3.39	2.74	2.89	Industrial Alliance/IAP	-	-	3.19	2.79	2.89	3.19	2.74
President's Choice Finan	2.70	-	-	2.79	3.34	3.99	4.44	Luminus Financial	3.25	-	3.25 - 6.25op	3.20	3.65	4.00	4.50
Royal Bank	2.45	6.75op	3.14 - 6.75op	2.29	2.64	2.74	2.94	Meridian Credit Union	2.50	4.00	3.09 - 6.30op	3.09	3.55	4.19	2.59
TD Canada Trust	2.45	-	2.89 - 6.30op	2.84	3.39	2.64	4.64	PACE Savings & C.U.	-	5.00 - 6.70op	2.89 - 6.30op	2.59	3.39	3.89	4.64
Tangerine	2.70	-	3.19	3.24	3.49	3.69	3.79	Parama Credit Union	2.65	-	2.80 - 2.95op	2.85	2.95	3.05	3.15

*Also offer 7- to 10-year mortgages. op = open mortgage. n.a. = not available from company. ro = renewals only dashes (-) mean companies not quoting at present.